

Let **UK** Home

1 Bedrooms

Flat

Located in London

£2,500 Per Month



[info@letukhome.co.uk](mailto:info@letukhome.co.uk)

<https://www.letukhome.co.uk/>

01795 358 886



# Filmworks Walk London

W5 5BT



Let UK Home are excited to offer this spectacular one-bedroom apartment in the heart of Bogart House part of the Filmworks.

The flat comprises a spacious open kitchen with a stylishly attached dining area, a magnificent living room leading to a balcony, one bright bedroom and one modern bathroom.

This development includes concierge service, reception hall, elevator and corridor. Each unit has a secure door locking system and a color video door phone, connected to the concierge, and equipped with a closed-circuit television security system.

Filmworks is a short walking distance from Ealing Broadway Underground Station, which offers Central Line, District Line and National Rail services. Local bus routes are also readily accessible, and the National Rail provides fast connections to Paddington Station and Heathrow Airport. The Elizabeth Line runs directly from Filmworks to Oxford Street and Bond Street, with swift journeys available to Canary Wharf as well.

Ealing is a traditional high-quality school district in London, surrounded by educational resources. From Filmworks, you can walk to the Ealing campus of the University of West London. Many excellent private schools in London are also located nearby, including the world-renowned Harrow School, St. Benedict's School and Durston House School. In addition, you can quickly reach many famous universities by rail transit.

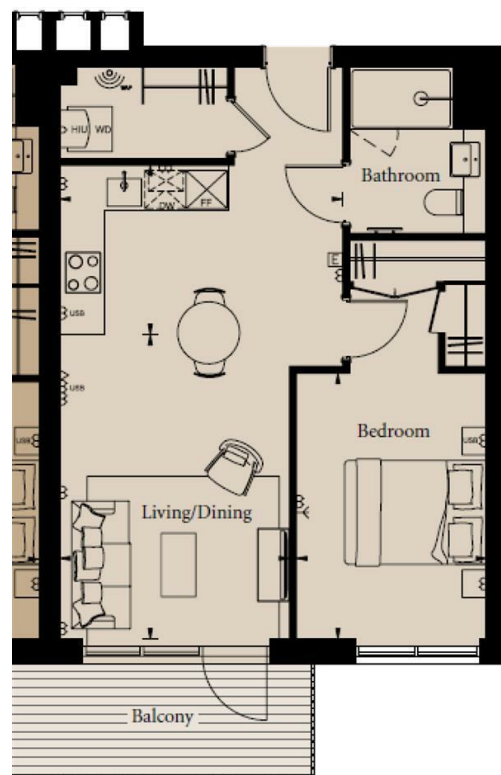
# Filmworks Walk London

£2,500 Per Month

- 7th Floor
- 24h Security
- Lifts
- EPC Rating: B

- Concierge Service
- Video Entry
- CCTV





APARTMENT	- 1 BEDROOM	58.1 sq m	625 sq ft
Living/Dining	4.4m x 3.3m	14'6" x 11'0"	
Kitchen	4.1m x 2.5m	13'6" x 8'0"	
Bedroom	3.8m x 2.8m	12'7" x 9'0"	
Balcony	7.0 sq m	75 sq ft	



Let **UK** Home

3F 2 Eastbourne Terrace

Paddington

London

W2 6LG

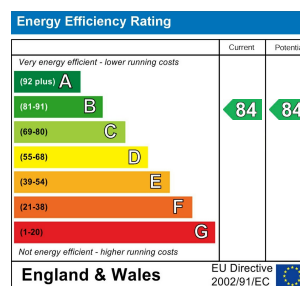
01795 358 886

info@letukhome.co.uk

**Council Tax Band: D**

**Local Authority:**

Agents Note: Whilst every care has been taken to prepare these particulars, they are for guidance purposes only. All measurements are approximate and are for general guidance purposes only and whilst every care has been taken to ensure their accuracy, they should not be relied upon and potential buyers/tenants are advised to recheck the measurements.



<https://www.letukhome.co.uk/>